

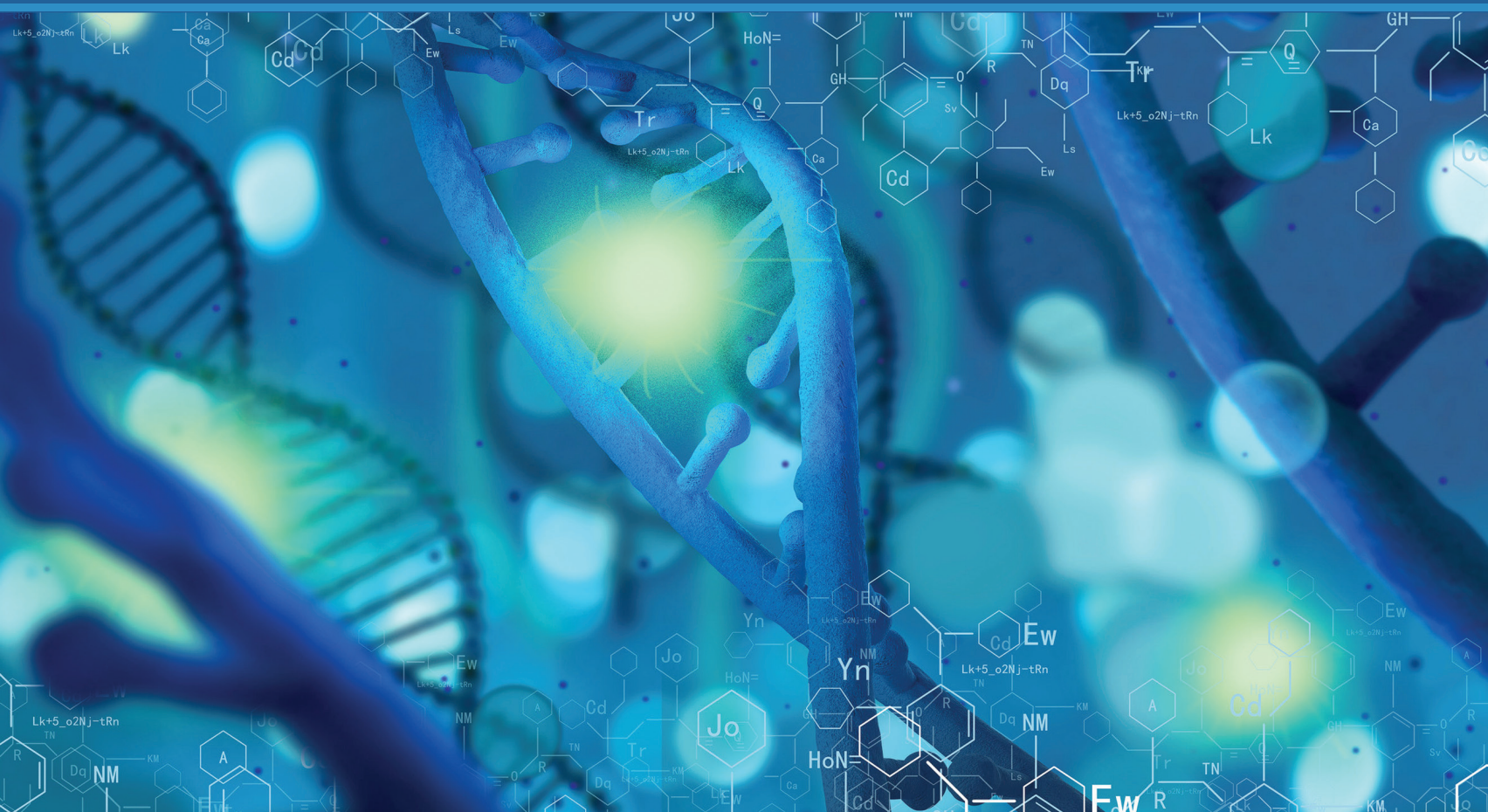


# NCSSS

National Consortium of  
Secondary STEM Schools

## PROFILE AND MEMBER DIRECTORY

# 2021- 2022



[ncsss.org](https://ncsss.org)

## 2021-22 Board of Directors

NCSSS President Ann Bonitatibus, Thomas Jefferson High School for Science and Technology, Alexandria, VA

NCSSS President-Elect Patrick Widhalm, Benjamin Franklin High School, New Orleans, LA

NCSSS Treasurer Sean Dolcy, The High School for Math, Science and Engineering, Harlem, NY

NCSSS Secretary Kristi Pope Key, Louisiana School for Math, Science and the Arts, Natchitoches, LA

NCSSS Immediate Past President Daniel S. Dorsel, South Carolina Governor's School for Science and Math, Hartsville SC

NCSSS Executive Director Todd S. Mann, Washington DC

Comfort Akwaji-Anderson, Illinois Mathematics and Science Academy, Aurora, IL

Corey Alderdice, Arkansas School for Mathematics, Sciences and the Arts, Hot Springs, AR

Jason Calhoun, The Governor's School @ Innovation Park, Manassas, VA

Jennifer Cava, Academy for Science and Design, Nashua, NH

Jason Flowers, The Liberal Arts & Science Academy, Austin, TX

Tiffany Huitt, Woodrow Wilson/Townview Dallas Independent School District, Dallas, TX

Terry Lynch, North Carolina School of Science and Mathematics, Durham, NC

Crystal Miller, Hathaway Brown School, Cleveland, OH

Lisette Morris, The Ingenuity Project at Baltimore Polytechnic Institute (Poly), Baltimore, MD

Luke Perry, Battle Creek Area Mathematics and Science Center, Battle Creek, MI

Tinell Priddy, Academies of Loudoun, Leesburg, VA

Roger Schieferecke, Center for Student Success and Professional Services, Kansas State University

Therese Tipton, Raisbeck Aviation High School, Seattle, WA

Jo Weller, Brown Family Foundation, Kansas City, MO

Corey Williams, Rockdale Magnet School of Science and Technology, Conyers, GA



# NCSSS Profile and Member Directory

## History of the Consortium

The National Consortium of Secondary STEM Schools (NCSSS) was established in 1988 to provide a forum for specialized secondary schools focused on science, technology, engineering, and mathematics (STEM) disciplines to exchange information and program ideas.

*The initial thrust to establish a national organization came from four schools: North Carolina School of Science and Mathematics; Thomas Jefferson High School for Science and Technology (VA); Louisiana School for Mathematics, Science, and the Arts; and the Illinois Mathematics and Science Academy, who were joined by 11 additional schools from across the country to establish the Consortium.*

Celebrating our 30th anniversary in 2018, the Consortium now includes approximately 80 member schools (high schools), many 'ranked' as the best in the country, along with 30 affiliate members (colleges, universities, and summer programs) located in 32 states, that share the goals of transforming mathematics, science, and technology education. The Consortium has expanded membership in 2016 to include international members and corporate members.

The NCSSS mission is to advance STEM education by providing professional development and networking opportunities for educators and learning experiences for students; to serve as a national resource for STEM schools and programs in partnership with educational, corporate, and international organizations; and to inform policymakers on STEM education.

Our vision is to serve as the resource for secondary STEM schools by supporting collaboration and knowledge sharing and providing professional development for teachers and administrators to positively impact student achievement in authentic STEM educational environments.

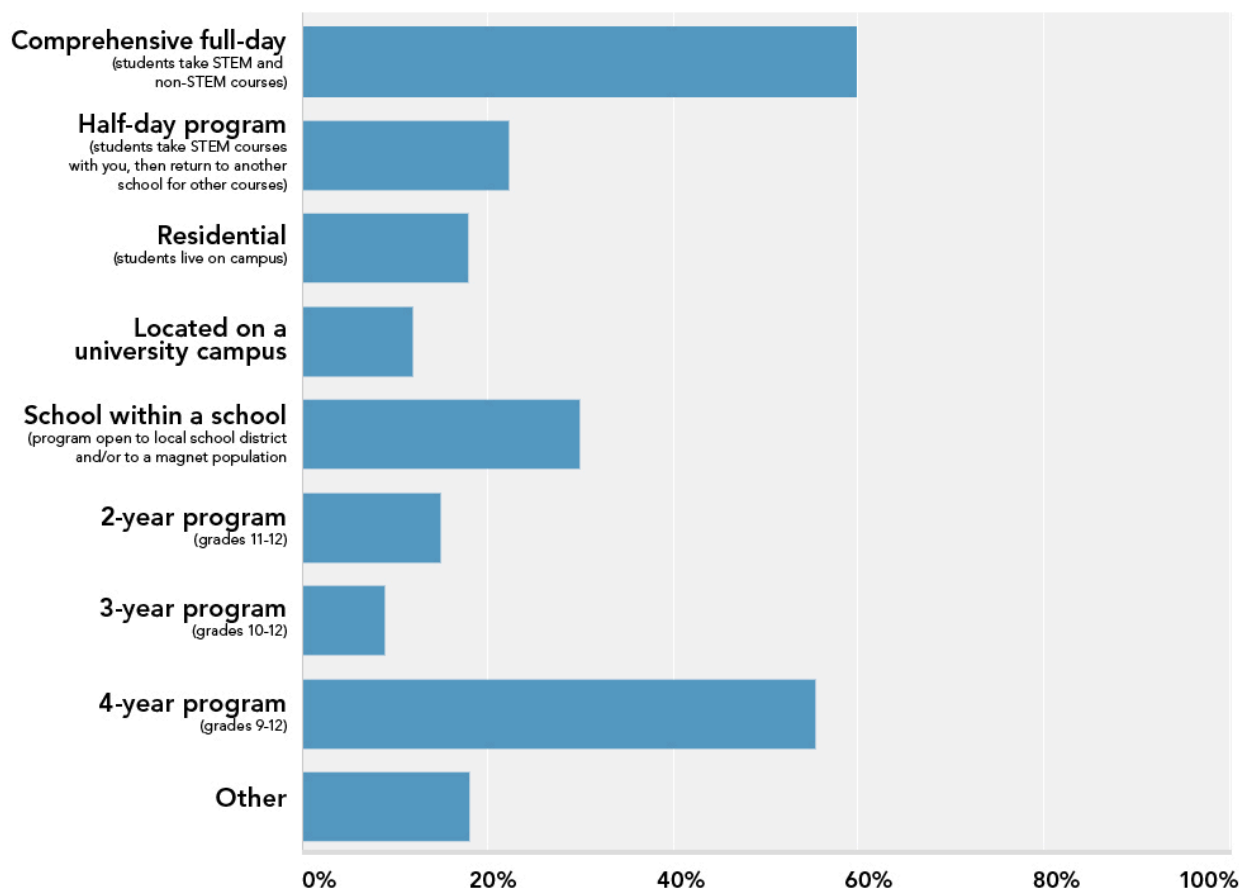
NCSSS, a 501c3 non-profit organization, holds programs and events to develop STEM talents for students, educators, and administrators. Our annual Professional Conference provides professional development opportunities to member and nonmember educators. Our annual Summer Student Research Conference draws participants from Consortium schools across the country, where students meet to share their research projects. Administrators gather every summer to share ideas with colleagues from across the U.S. at our annual Administrators Summit.

Consortium publications include a monthly newsletter and the STEM Edge magazine released quarterly. The true value of NCSSS is the incredible depth of teaching and educational leadership experience held among the member schools and affiliate organizations.

For more than a quarter century, Consortium members have worked with dedication and passion to provide resources to STEM educators and students. We invite STEM-focused schools, organizations, foundations, corporations, international organizations, and individuals to apply for Consortium membership. Membership criteria and our membership application may be found at [www.ncsss.org](http://www.ncsss.org).

This Membership Profile includes an overview of the Consortium. The diversity of structures within the Consortium is one of our greatest strengths. There is no one way to provide a world-class STEM education – programs offered must be developed to meet the needs of the community and stakeholders. Still, there are trends worth noting from the most recent member survey conducted two years previously.

## Consortium Schools Deliver STEM to Students in a Variety of School Program Structures



## Student Population and School Size

Consortium schools range in size as the largest serves a population of over 3,000 students and the smallest has just over 100 students. Approximately three-quarters of Consortium schools have 50% or greater female enrollment. Almost a third of Consortium schools have 25% or more students on free and reduced lunch.

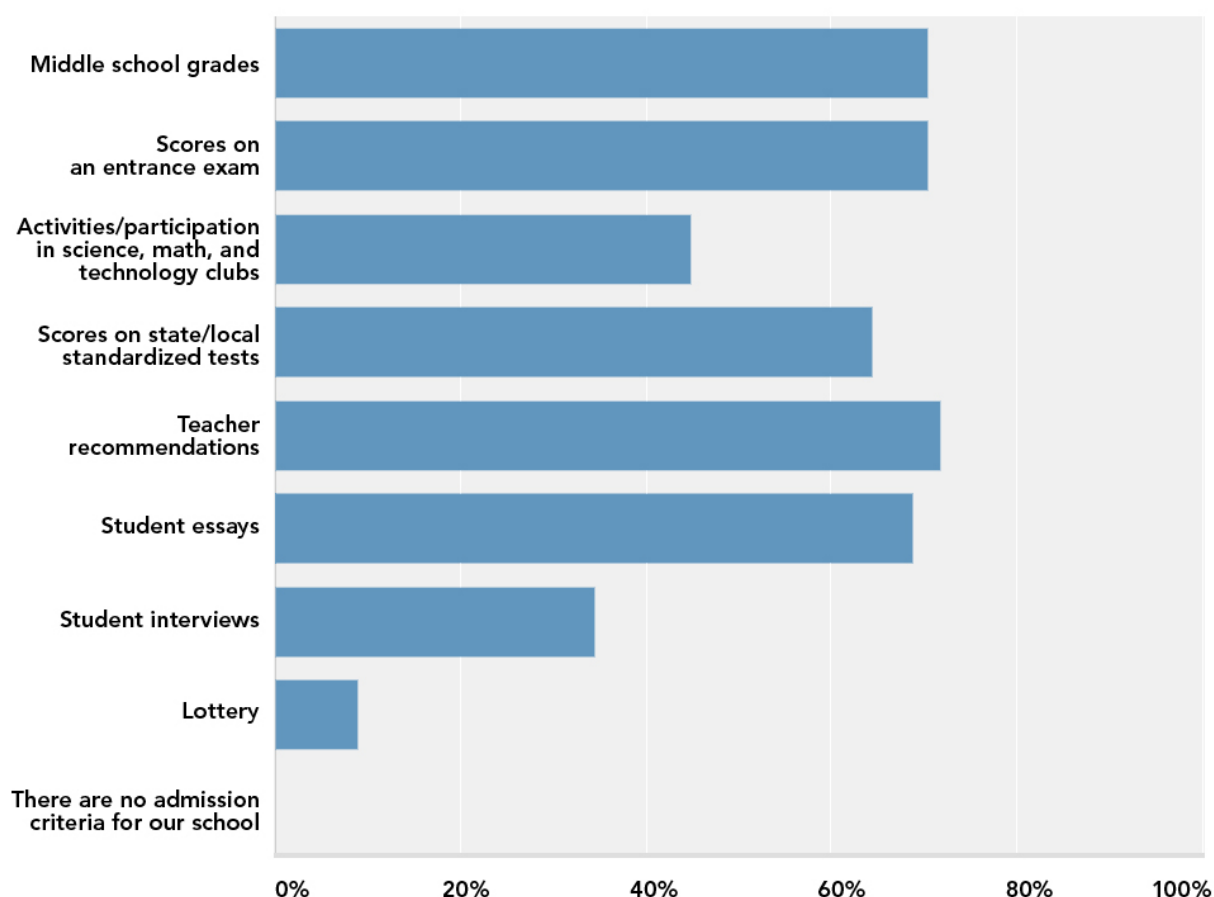
## Consortium Students are High-Performing in SAT and ACT

- Average student SAT Math score is 663.4 – US average is 514
- Average student SAT Verbal score is 639 – US average is 496
- Average student ACT score is 29 – US average is 21

## Admission Rigor at Consortium Schools

Admission requirements for Consortium schools are highly selective. About half of Consortium schools admit less than 50% of their applicants; one-third of schools admit 25% or less of their applicants.

A majority of schools use a combination of middle school grades, teacher recommendations, entrance exams, and student essays to determine admission.



## Scholarship Opportunities at Consortium Schools

Creating a challenging and creative learning venue, Consortium schools attract the highest performing and motivated students with significant scholarship awards. Member schools offer both merit- and needs-based packages. Awards range in amount from school to school. Most schools grant full and partial awards. The majority of awards are merit-based, attesting to the high ability of students.

## Consortium Students Post-Secondary Path

Virtually all students move on to a four-year college career at their school of choice. Nearly 100% of Consortium schools send their students to four types of colleges/universities – Ivy League, highly competitive national universities/colleges, public universities, and private universities. 93% of Consortium members graduate students that attend Ivy League schools and 96% have graduates that attend highly competitive national colleges/universities.



# INSTITUTIONAL MEMBERS

---

## ALABAMA

Alabama School of Fine Arts-Russell Math & Science Center  
Alabama School of Math and Science

## ARKANSAS

Arkansas School for Mathematics, Sciences and the Arts

## GEORGIA

The Center for Advanced Studies in Science, Math, and  
Technology at Wheeler High School  
Gwinnett School of Mathematics, Science, and Technology  
Rockdale Magnet School for Science and Technology

## ILLINOIS

Illinois Mathematics and Science Academy  
Wheeling High School

## KANSAS

Kansas Academy of Mathematics and Science

## KENTUCKY

Craft Academy at Morehead University  
Gatton Academy of Mathematics and Science in Kentucky

## LOUISIANA

Benjamin Franklin High School  
Louisiana School for Math, Science, & the Arts

## MAINE

Maine School of Science and Mathematics

## MARYLAND

Baltimore Polytechnic Institute  
Charles Herbert Flowers High School  
DuVal High School  
Eleanor Roosevelt Science and Technology Center  
The Ingenuity Project  
Baltimore Polytechnic Institute Hamilton  
Elementary/Middle School Mount Royal  
Elementary/Middle School Roland Park  
Elementary/Middle School  
Montgomery Blair High School Science, Mathematics & Computer  
Science Magnet Program  
Oxon Hill Science & Technology Center  
Poolesville High School – A Whole School Magnet  
Science and Mathematics Academy at Aberdeen High School

## MASSACHUSETTS

King Philip Regional High School  
Massachusetts Academy of Mathematics & Science at Worcester  
Polytechnic Institute  
Nipmuc Regional High School  
Uxbridge High School

## MICHIGAN

Battle Creek Area Mathematics & Science Center  
Berrien County Math & Science Center  
Kalamazoo Area Mathematics & Science Center  
Lakeshore High School Math/Science Center

## MISSISSIPPI

Mississippi School for Mathematics & Science

## MISSOURI

Rockhurst High School  
St. Teresa's Academy

## NEW HAMPSHIRE

The Academy for Science and Design

## NEW JERSEY

Academy of Allied Health & Science- Monmouth County Vocational  
School  
Bergen County Academies  
Biotechnology High School  
Diana C. Lobosco STEM Academy  
High Technology High School  
Jose Marti STEM Academy  
Marine Academy of Technology and Environmental Science  
(OCVTS)  
Math and Science Magnet Program at Morris Hills  
The Academy for Mathematics, Science and Engineering

## NEW YORK

The Bronx High School of Science  
Brooklyn Technical High School  
High School for Math, Science and Engineering at The City College

## NORTH CAROLINA

North Carolina School of Science & Mathematics

## OHIO

Hathaway Brown School  
Ottawa Hills Junior/Senior High School

## OKLAHOMA

Oklahoma School of Science and Mathematics at Ardmore Regional  
Center

## PENNSYLVANIA

Downington STEM Academy

## SOUTH CAROLINA

South Carolina Governor's School for Science & Mathematics  
Spring Valley High School

## TEXAS

Academy for Careers in Engineering and Science  
Academy for Science & Health Professions Conroe ISD  
Academy of Science & Technology Conroe ISD  
Dallas Independent School District  
John Jay Science & Engineering Academy  
Liberal Arts and Science Academy of Austin at LBJ HS (LASA)  
School of Science and Engineering  
Texas Academy of Math and Science  
The Science Academy of South Texas

## UTAH

SUCCESS Academy at Dixie State University - DSU  
SUCCESS Academy at Southern Utah University - SUU

## VERMONT

Essex High School

## VIRGINIA

Academies of Loudon  
Central Virginia Governor's School for Science and Technology  
Governor's School @ Innovation Park  
New Horizons Governor's School for Science and Technology  
Shenandoah Valley Governor's School  
Southwest VA Governor's School for Science, Mathematics  
& Technology  
The Mathematics & Science High School at Clover Hill  
Thomas Jefferson High School for Science and Technology

## WASHINGTON

Camas Academy of Math and Science  
Raisbeck Aviation High School

## ASSOCIATE MEMBERS

---

### **ALABAMA**

Alabama School of Cyber Technology and Engineering

### **CALIFORNIA**

Western Center Academy

### **FLORIDA**

Holy Trinity Episcopal Academy

### **GEORGIA**

North Gwinnett High School

### **KANSAS**

Bishop Miege High School  
Blue Valley CAPS

### **MARYLAND**

Anne Arundel County Public Schools- Central Middle School  
Anne Arundel County Public Schools- Lindale Middle School  
Anne Arundel County Public Schools- Old Mill Middle South

### **MASSACHUSETTS**

Saint Paul Diocesan Junior/Senior High School  
St. John's Prep

### **MINNESOTA**

Shattuck-St. Mary's School

## AFFILIATE MEMBERS

---

### **CALIFORNIA**

Challenge Success  
College Bridge  
Minerva University

### **FLORIDA**

Florida Institute of Technology  
University of Miami  
University of Tampa

### **GEORGIA**

Savannah College of Art and Design

### **ILLINOIS**

Center for Talent Development at Northwestern University  
Illinois Institute of Technology  
Society of Actuaries  
Southern Illinois of University

### **INDIANA**

Purdue University

### **KANSAS**

Kansas State University

### **MASSACHUSETTS**

Massachusetts Institute of Technology  
Olin College of Engineering  
Smith College

### **MISSOURI**

Brown Family Foundation  
Rockhurst University  
Saint Louis University  
St. Louis College of Pharmacy  
Washington University in St. Louis

### **NEVADA**

Institute of Electrical and Electronics Engineers (IEEE)

### **NEW YORK**

Columbia University  
Rensselaer Polytechnic Institute  
Stony Brook University  
Syracuse University

### **OHIO**

Case Western Reserve University

### **VIRGINIA**

Randolph College

### **UNITED KINGDOM**

St. John's College



# INTERNATIONAL MEMBERS

---

Kamnoetvidya Science Academy

National School of Physics and Math (FizMat)

Philippine Science High School Main Campus

**NCSSS**  
**PO Box 151738**  
**Chevy Chase, MD 20825-1738**

**ncsss.org**